

B AC Motors

2 Pole Motor 25W(□ 80mm)

25W

2 Pole Motor
25W(□ 80mm)

Motor Specification

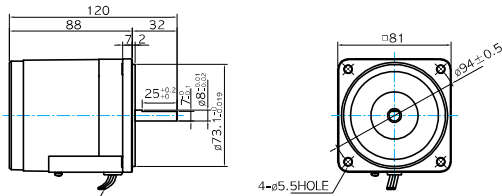
Model 8IDD*-25-A(T): D-Cut Type Shaft		Output W	Voltage V	Frequency Hz	Poles	Duty	Starting Torque		Rated Load			Capacitor μF / VAC	
Lead Wire Type	Terminal Box Type						kgfcm	N.m	Speed r/min	Current A	Torque kgfcm N.m		
8IDD1(A)-25-A	8IDD1(A)-25-AT	25	1 ∅ 110	60	2	Cont.	0.75	0.075	3200	0.52	0.76	0.076	6.0 / 250
8IDD2(D)-25-A	8IDD2(D)-25-AT	25	1 ∅ 220	60	2	Cont.	0.73	0.073	3200	0.26	0.76	0.076	1.5 / 450
8IDDE-25-A	8IDDE-25-AT	25	1 ∅ 220	50	2	Cont.	0.73	0.073	2600	0.24	0.94	0.094	1.5 / 450
			1 ∅ 240				0.91	0.091		0.26	0.94	0.094	
8IDD3(G)-25-A	8IDD3(G)-25-AT	25	3 ∅ 220	50	2	Cont.	2.12	0.212	2700	0.15	0.90	0.090	-
				60			1.70	0.170	3200	0.15	0.76	0.076	
			3 ∅ 230	50	2	Cont.	2.29	0.229	2700	0.16	0.90	0.090	-
				60			1.85	0.185	3200	0.16	0.76	0.076	

- 1) Enter the phase & voltage code in the place * within the motor model name.
- 2) The phase & voltage code A, D, E, G contain a built-in thermal protector.

Dimensions

LEAD WIRE TYPE

- MOTOR MODEL: 8IDD□-25-A (NO FAN)



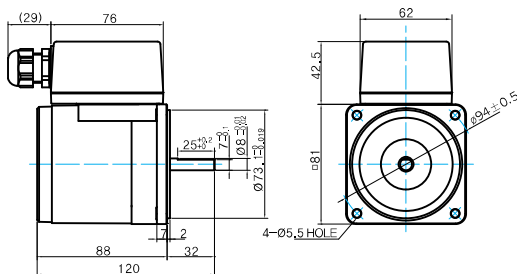
LEAD WIRE 300mm
UL STYLE NO.3271 AWG NO.20

MOTOR OUTPUT SHAFT

MODEL	SPEC
D-CUT TYPE	

TERMINAL BOX TYPE

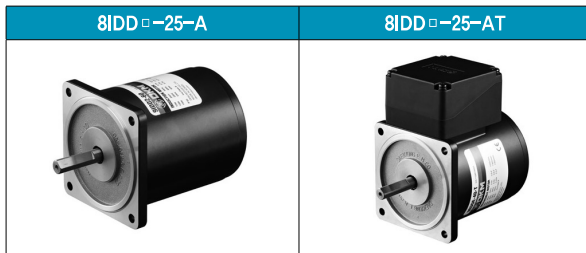
- MOTOR MODEL: 8IDD□-25-AT (NO FAN)



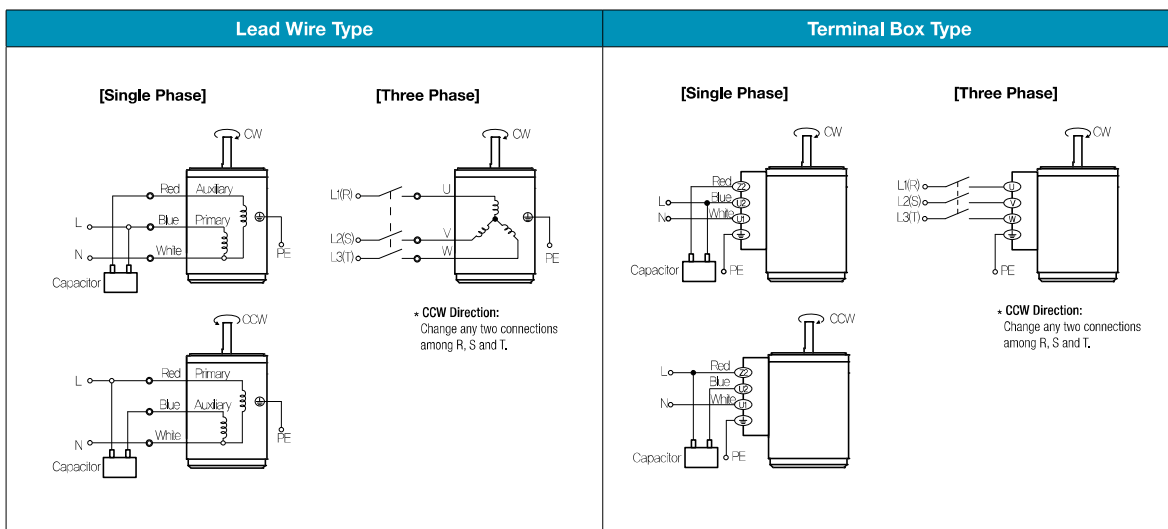
WEIGHT

PART	WEIGHT(Kg)
MOTOR	1.56

Motor Images



Connection Diagrams



1) The direction of motor rotation is as viewed from the shaft end of the motor.

2) CW represents the clockwise direction, while CCW represents the counterclockwise direction.

3) Change the direction of single phase motor rotation only after bringing the motor to a stop. If an attempt is made to change the direction of rotation while the motor is rotating, the motor may ignore the reversing command or change its direction after some delay.